



**Take out one of the side panels.**



**Install the L-brackets to the back pabel.**



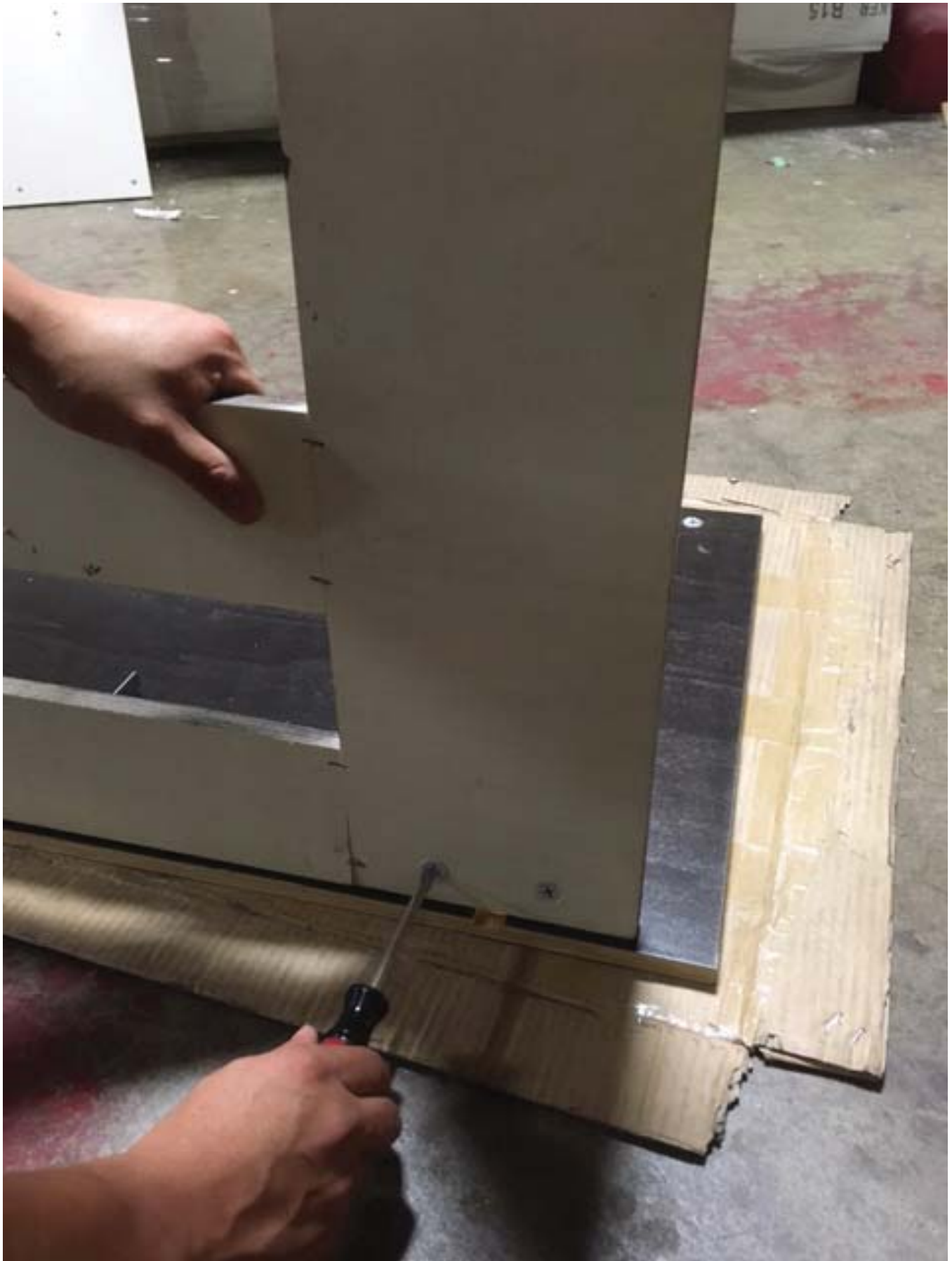




**Attach cam-lock screws to the pre-drilled holes on the side panel.**



**Attach the back panel to the side panel with cam-lock screws.**



**Fasten the cam-locks on the back of the back panel.**



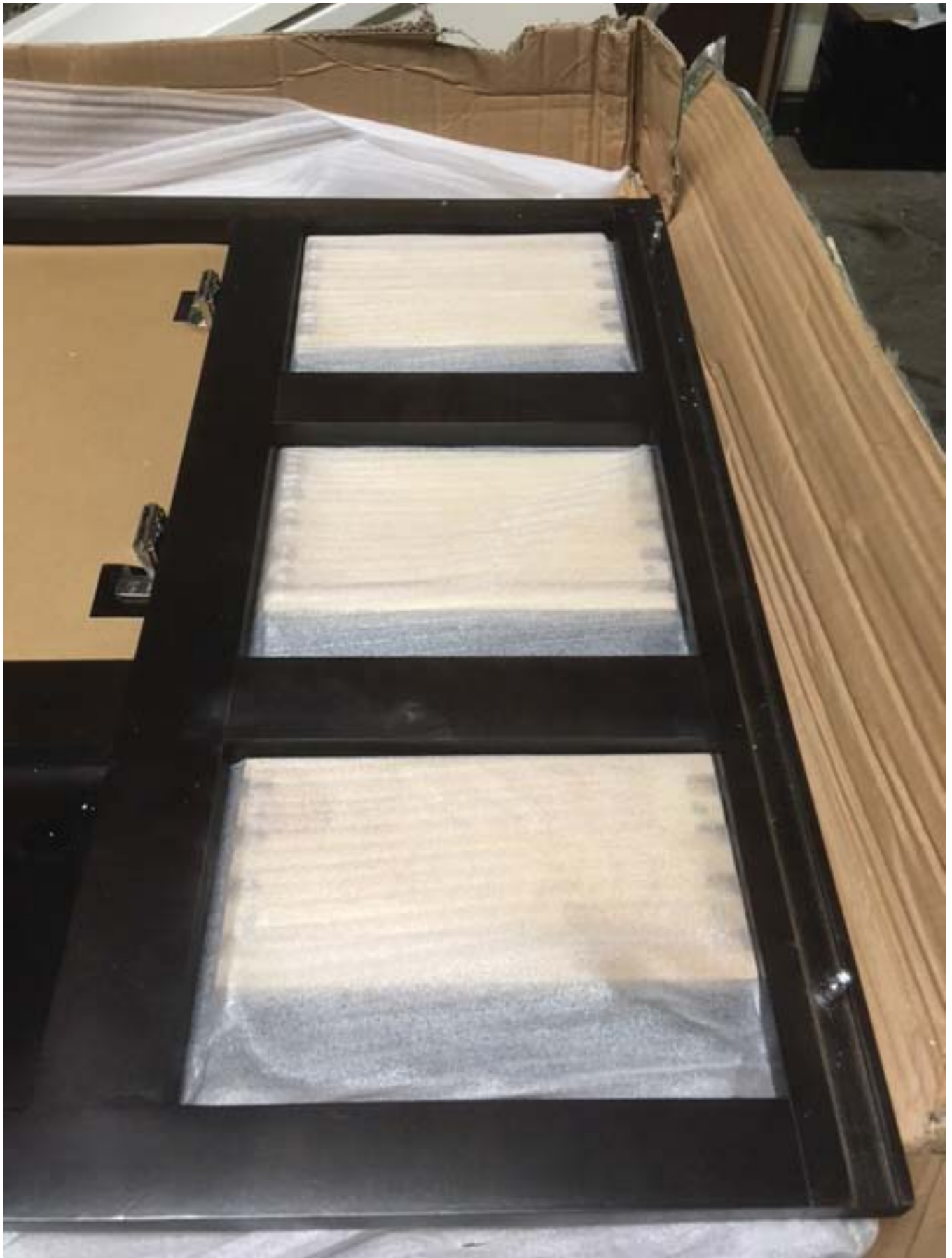


**Attach the bottom panel.**



**Attach the other side panel.**





**Install cam-lock screws to the frame.**



**Attach frame to the box.**

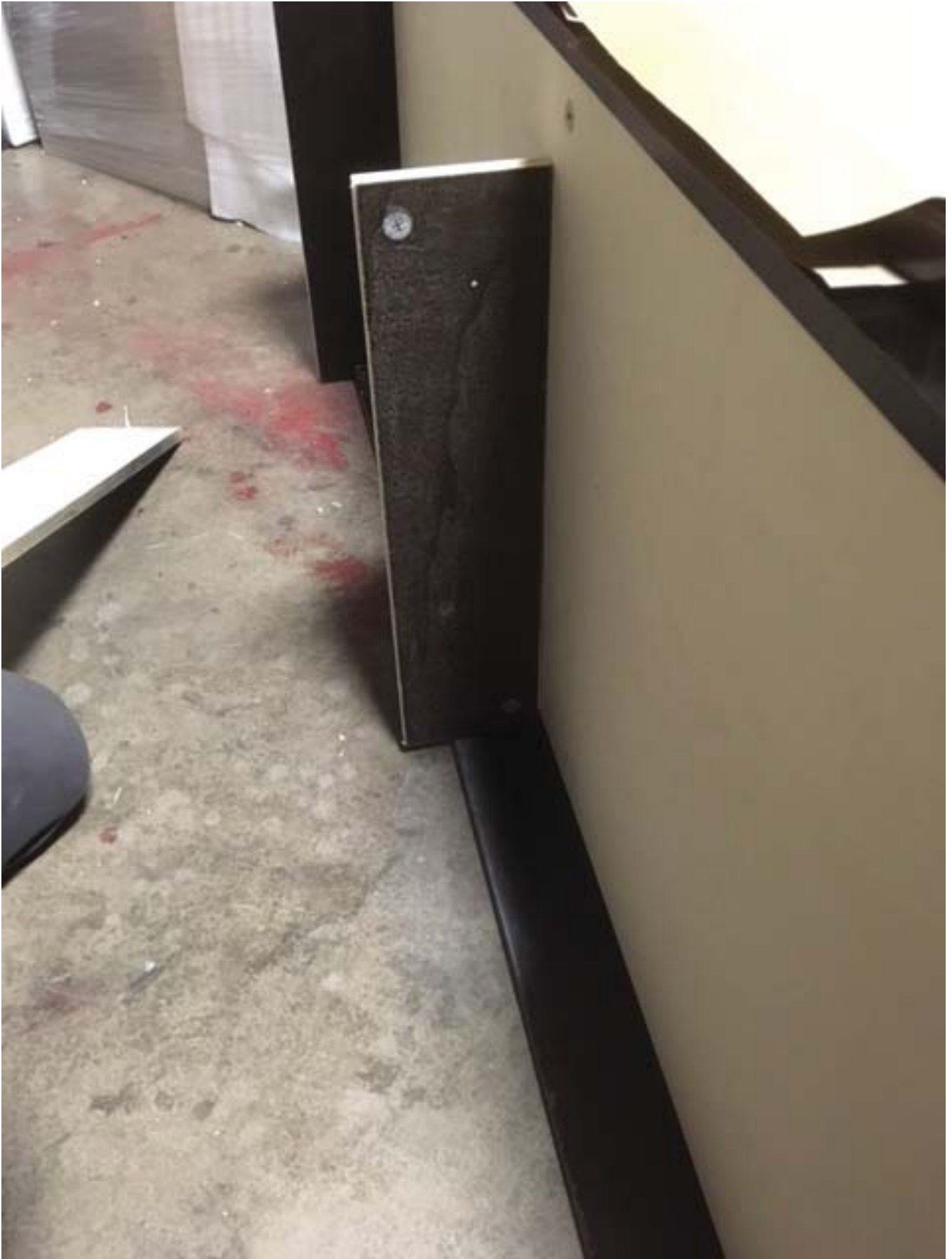








**Tighten all the cam-lock to secure the frame to the box.**



**Install cabinet supportive board in the middle of the bottom panel.**





**Install kick board.**



**Fasten all the cam-locks at the bottom.**



**Insert ball bearing tracks to the bracket.**





**Install the track to the frame.**





**Use hammer to connect the dovetail drawer box.**





**Slide in the drawer bottom panel.**



**Install drawer slide bracket to the bottom of the drawer box.**



**Attach drawer box to the track.**







**Now it's finished.**